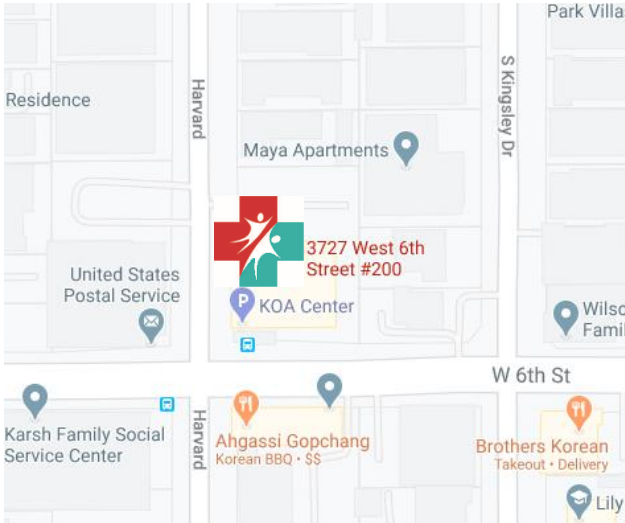


Drive-Thru COVID-19 Testing at Kheir Clinic



No drinking, eating, smoking, or chewing gum for at least 30 minutes before your testing appointment.



The testing location is:
Kheir Clinic
3727 W. 6th Street
Los Angeles, CA 90020.

Testing takes place in the parking lot behind the building.



The parking lot entrance is on Harvard Boulevard.

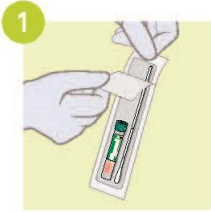
Remain in your vehicle at all times.

A Kheir staff member will approach your car when it is your turn to test. Our staff will provide you with a paper bag. The bag will contain your COVID-19 test kit and instructions.

Follow the instructions and complete the test. Keep your windows closed while you take the test. Place the completed test back into the bag, roll down your window, and return it to Kheir staff.



COVID-19 Testing Instructions



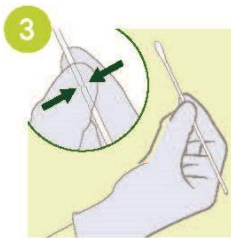
1 Open the package.

First, take out the tube. Unscrew the lid and place the tube and the lid to the side. Be careful and do not knock over the tube: it has liquid inside.



2 Next, peel the wrapper off the swab.

DO NOT TOUCH THE TIP of the swab, and DO NOT LAY THE SWAB DOWN.



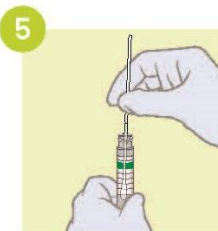
3 Hold the swab in the middle of the stick, at the place where you see a line.



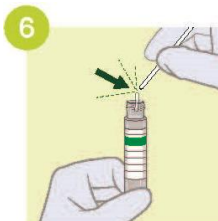
4 Rub the swab in 3 places:

- (1) on the roof of your mouth towards the back,
- (2) on the back right side of your mouth, behind your teeth,
- (3) on the back left side of your mouth, behind your teeth.

Twist the stick between your fingers while you rub.

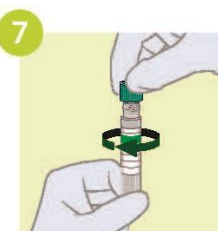


5 Insert the swab into the tube.



6 Break the swab stick where you see the line. Press the stick against the side of the tube, and it will snap off. Throw the top of the stick in the trash.

Be careful not to spill the liquid in the tube. Wash your hands with soap and water if liquid splashes on your skin.



7 Put the cap on the tube and close tightly.

Put the closed tube in the bag provided, and tell a staff member when you are done.

Thank you!